

Please make sure that **eToken is not plugged** into the usb port until the installation program requests that.

If at any time Windows tries to install drivers using Plug and Play cancel the Found New Hardware wizard.

You MUST install the C-Map Chart Database first, then install the C-Map chart licence.

And install charts through ECPINS menu also.

There are 4 processes to install C-Map chart and licence:

1. Install C-Map Utilities

Insert ECPINS Software CD into the drive.

Terminate the ECPINS installation process.

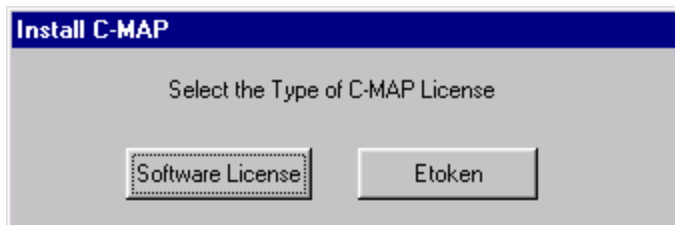
Open a Windows Explorer.

Select CDROM drive.

Select folder Utilities > C-Map

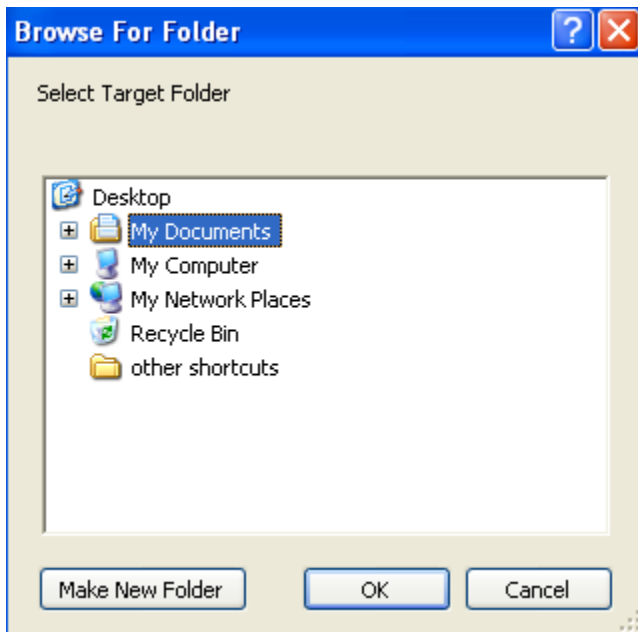
Double click **InstallCMAP.exe**

The following dialog will pop up:



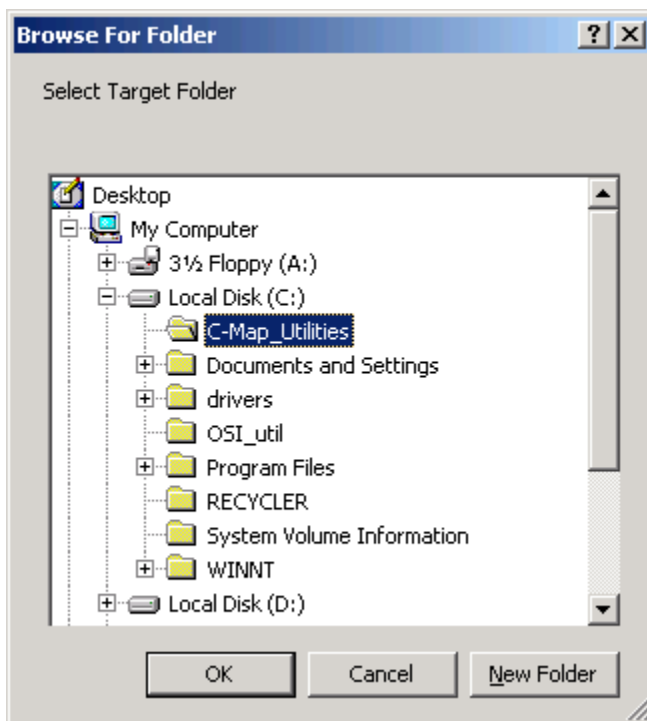
Select **Etoken**.

The following dialog box will pop up:



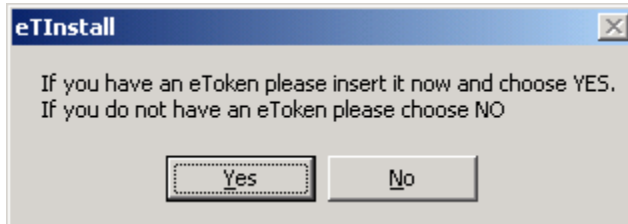
To create **C:\C-Map_Uilities** folder click on C: drive (under My Computer) and then select **Make New Folder**. Enter folder name '**C-MAP_Uilities**'.

Select C:\C-MAP_Uilities as the target directory.



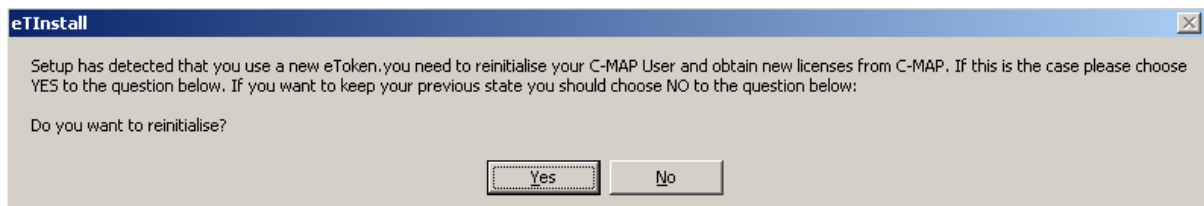
Click **OK** to continue the installation process.

Windows prompts to insert the Etoken.



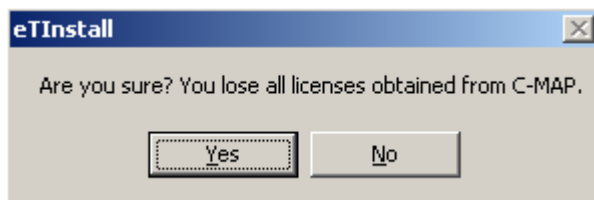
Insert Etoken and select **Yes**.

Depending on your system configuration (if you had installed C-MAP Utility program in past) you may see following dialog:



Select **Yes**.

Again, depending of your system configuration the new dialog might appear:



Select **Yes**.

Confirmation dialog shows that installation completed successfully.

Email the Etoken number to C-Map to obtain your user licence file (password.usr).

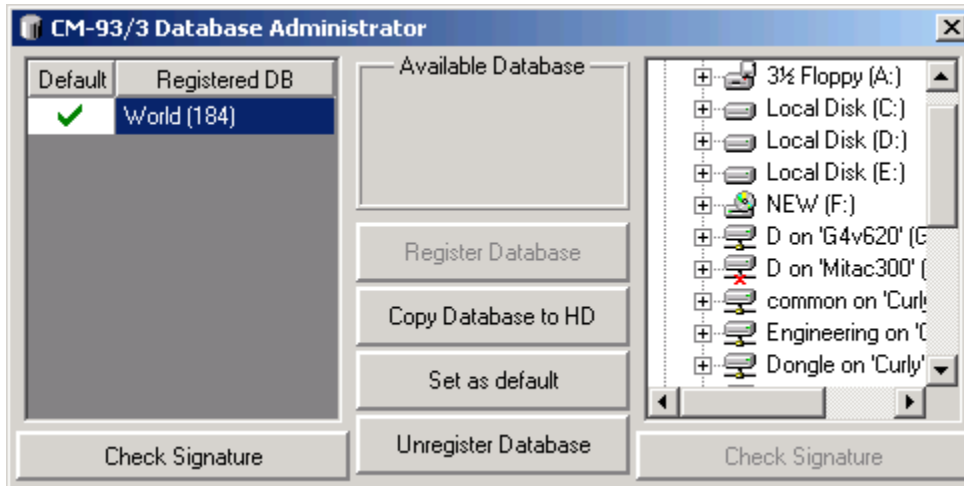
2. Install Chart database

Start ECPINS.

Insert the Chart Database CD into the drive

Using Windows Explorer create a folder for storing C-Map database (e.g. **D:\C-Map_Charts**)

Goto **ECPINS Main Menu > Chart Selection > Licenses > C-Map > Database Administrator**



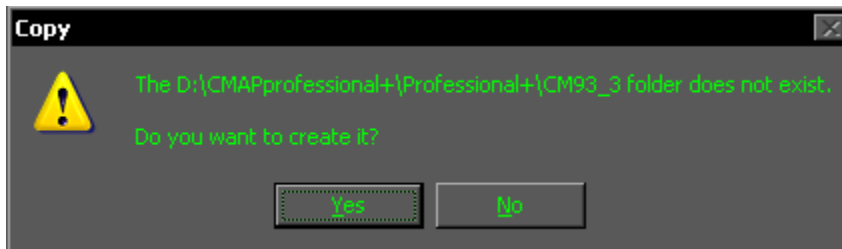
Click **Copy Database to HD**.

Select **D:**

Click the + sign beside D: to expand the folders

Select C-Map Database folder you have created above (**C-Map_Charts**)

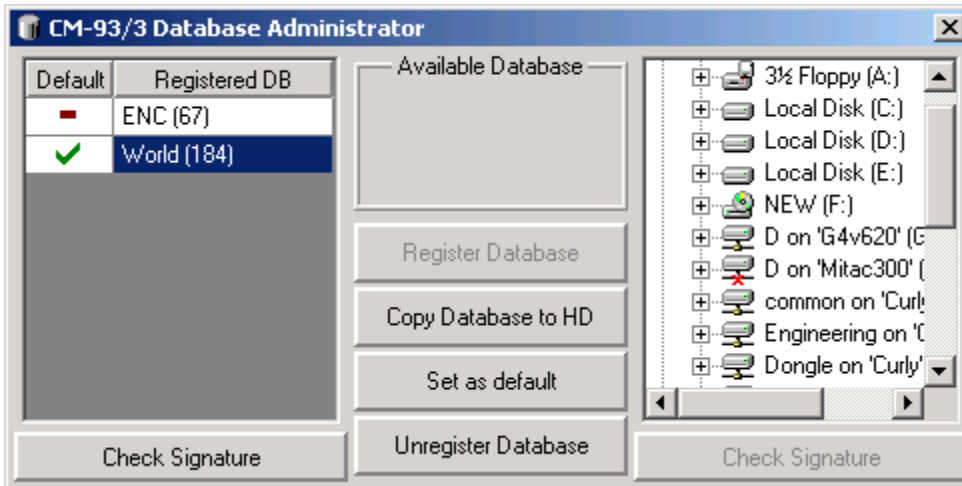
The following dialog will pop up:



Select **Yes** when prompt to create the new folder.

This will copy the database from the CD to the hard drive. Once it has finished copying, a pop up is displayed saying that the database has been successfully copied and registered.

This process applies to Professional (World), ENC or Professional+ charts.



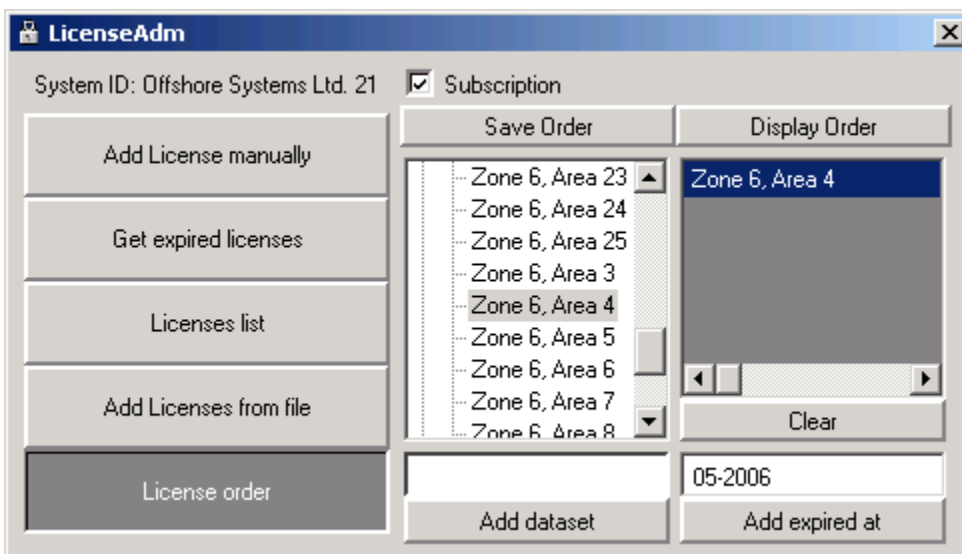
The last installed database is automatically registered. If you are installing licenses for some other database you will have to set it as default. This can be done by selecting the database and then pressing the Set as Default button. A green check mark will appear next to the defaulted database.

Click on button 'X' in top right hand side corner to close the Database Administrator window.

3. Install Chart Licence

To install chart licenses that you have received from C-Map (password.usr):

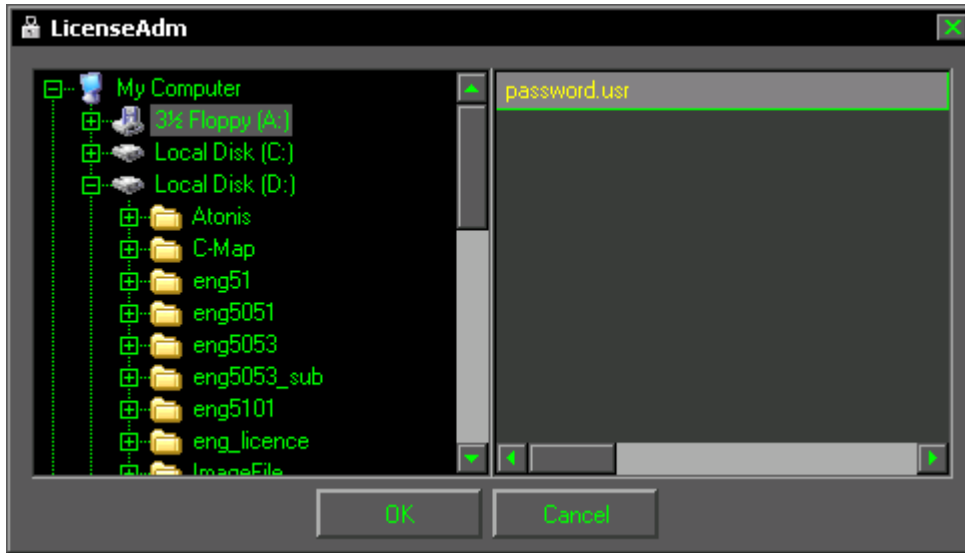
Goto **ECPINS Main Menu > Chart Selection > Licenses > C-Map > License Administrator**



Insert floppy that contains the Licence file from C-Map or copy the licence file to the ECPINS computer hard drive.

Click **Add Licenses from file**.

Select file **password.usr** from the floppy disk or hard drive.



Click **OK**.

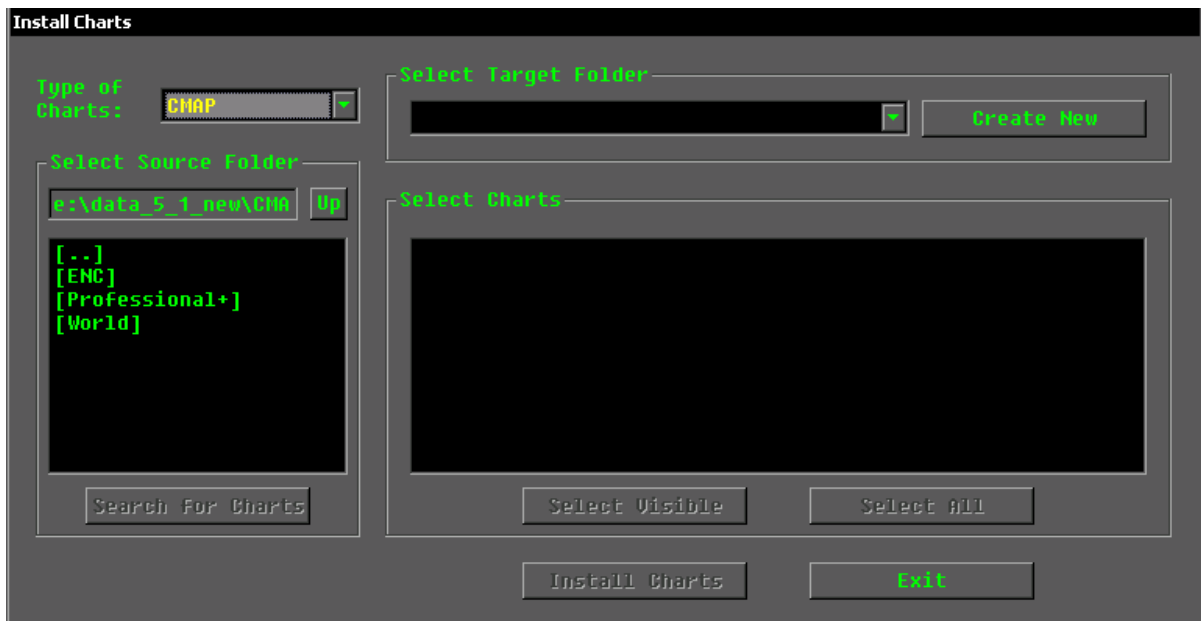
Click **Yes** to proceed.

Click **Close** to complete the installation of licence.

Click on 'X' button in top right hand corner of the License Administrator window to close it.

4. Install Charts through ECPINS Menu

Goto ECPINS Main Menu > Chart Selection > Chart Install > Install Charts

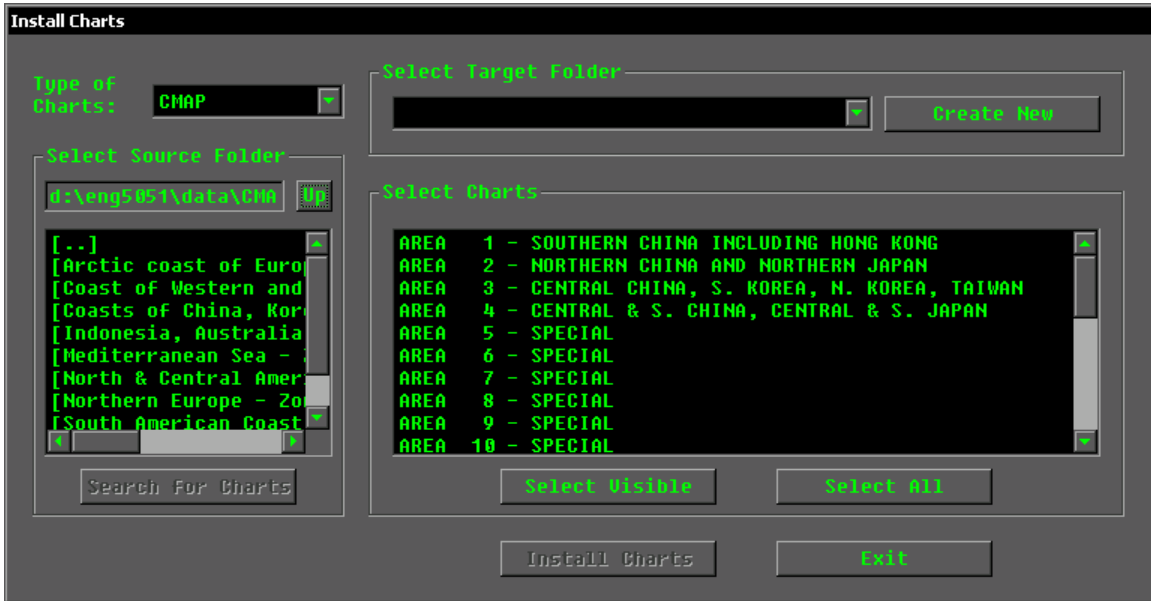


Select **C-Map** at Type of Charts

Different types of C-MAP Charts will be displayed, *ENC*, *World* or *Professional +*

Pick the relevant chart type (*World*, *Professional +* or *ENC*; depends on what you have purchased from C-Map)

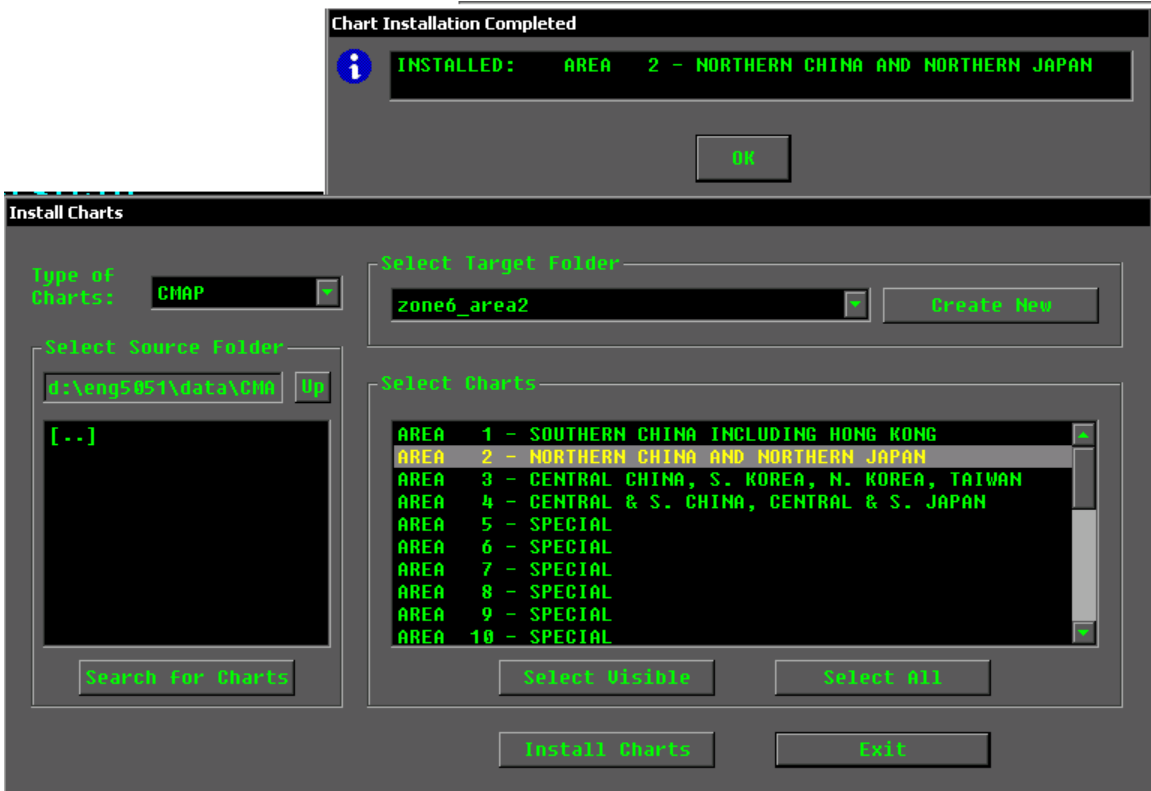
Select the relevant region or zone charts from the list.



MUST select **C-Map** (for all zones or type of chart) in **Select Target Folder**. *Note: This is not the same folder as the one you used for the database)*

Select area of interest or **Select All** to install the charts.

Click **Install Charts**.



Click **OK** to Chart Installation Completed pop up.

Installation of Charts completed.