

Updating CM-93/3 Chart

1. Set the system to Single mode and turn off Radar Overlay function.
2. Select Main Menu > Chart Menu > C-MAP Ed3 > Load and register for use.



fig.1

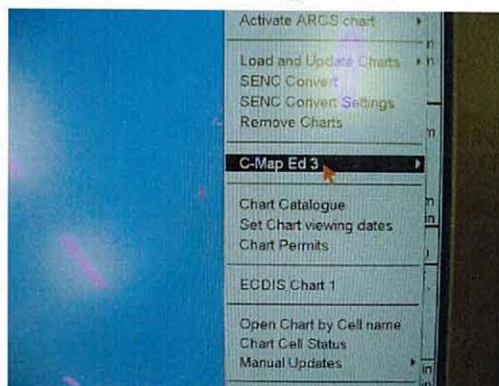


fig.2

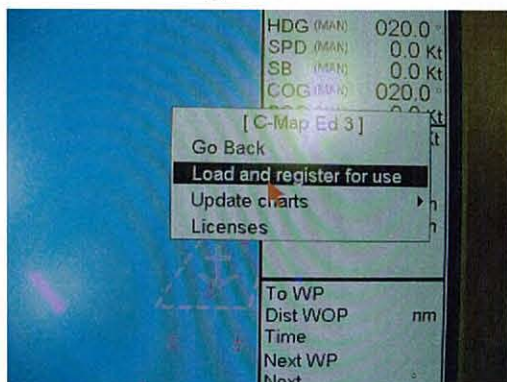


fig.3

3. The ECDIS software is automatically terminated and the window Fig.4 appears.

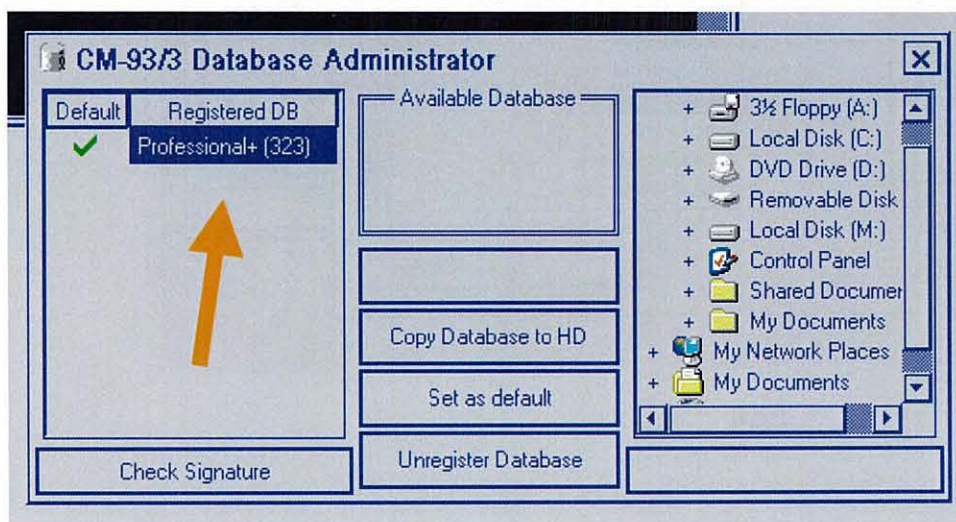


fig.4

Please confirm the chart version number.

4. Insert the CM-93/3 CD ROM into the CD drive.

5. Click **Copy Database to HD**.

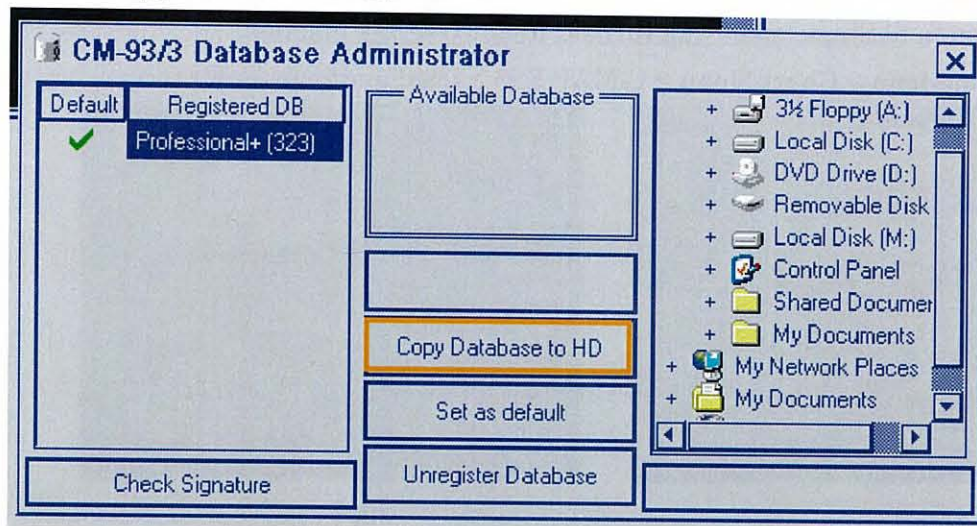


fig.5

6. Select **Local Disk(M)** to make a folder where the copy of the database is saved.

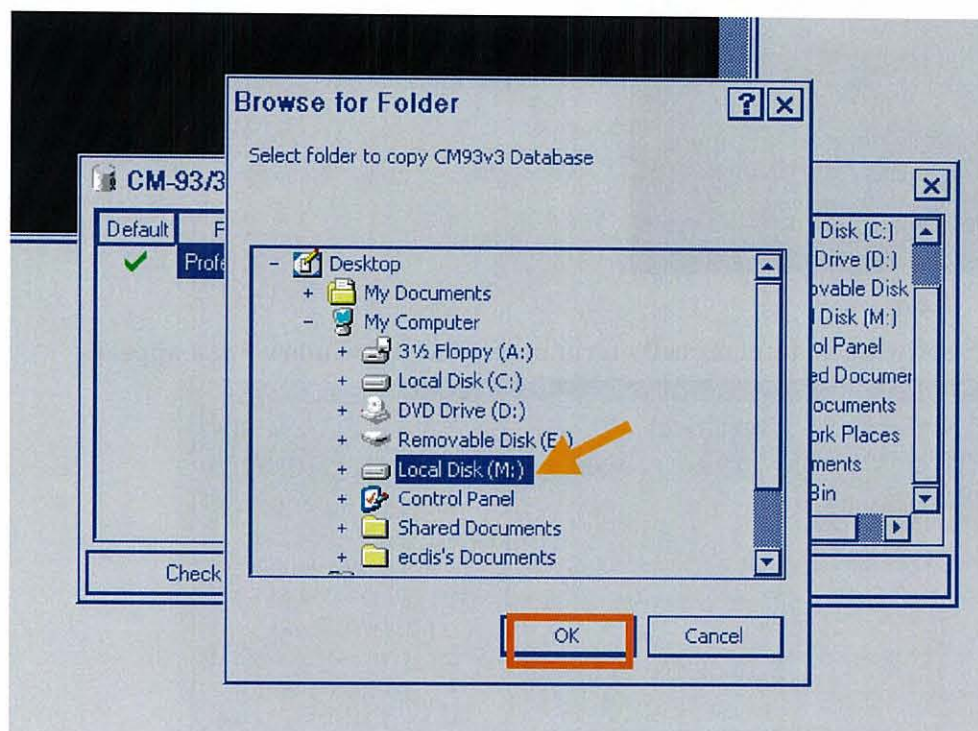


fig.6

7. Click Yes to All for replacing the existing file.

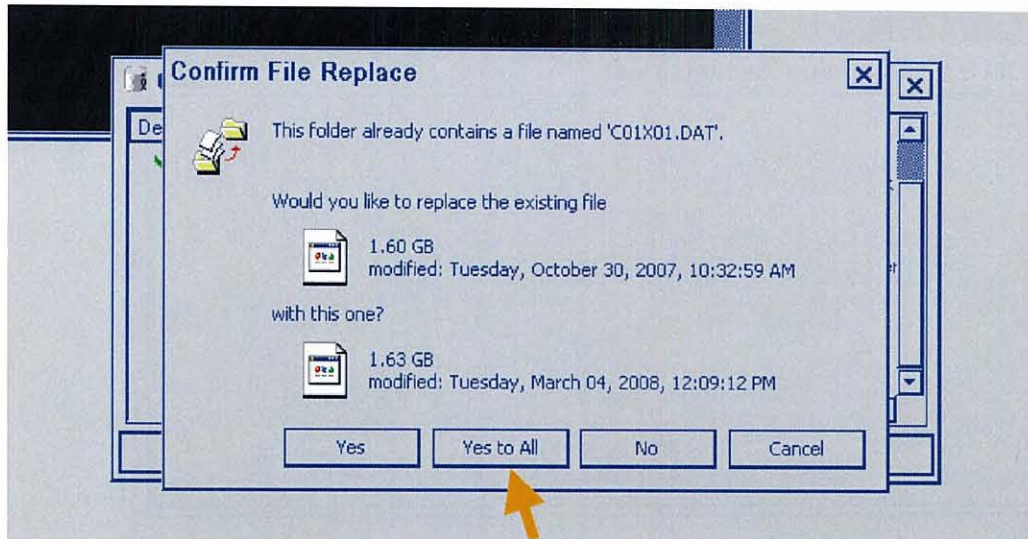


fig.7

8. Wait for about 10 minutes until the copy is complete.

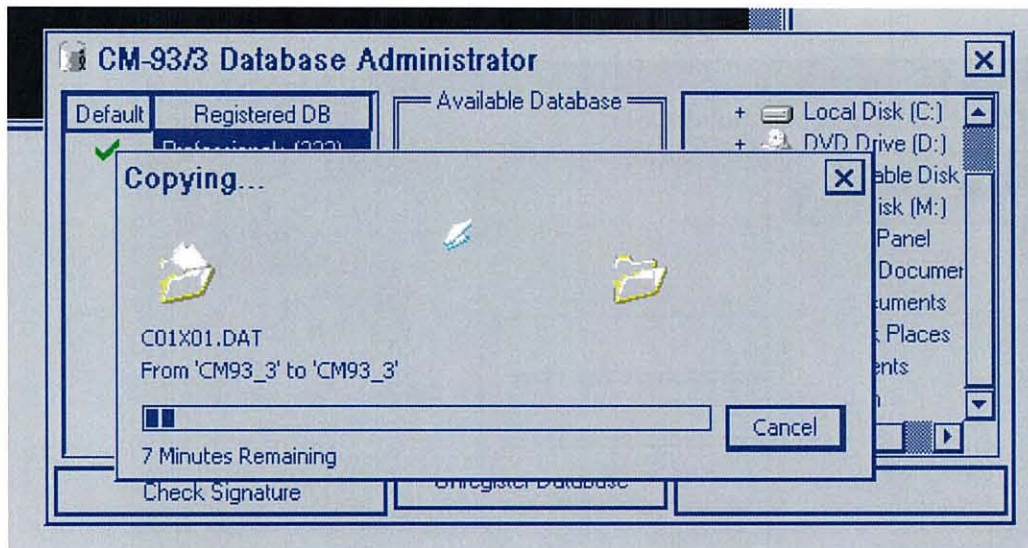


fig.8

9. Click **OK**.

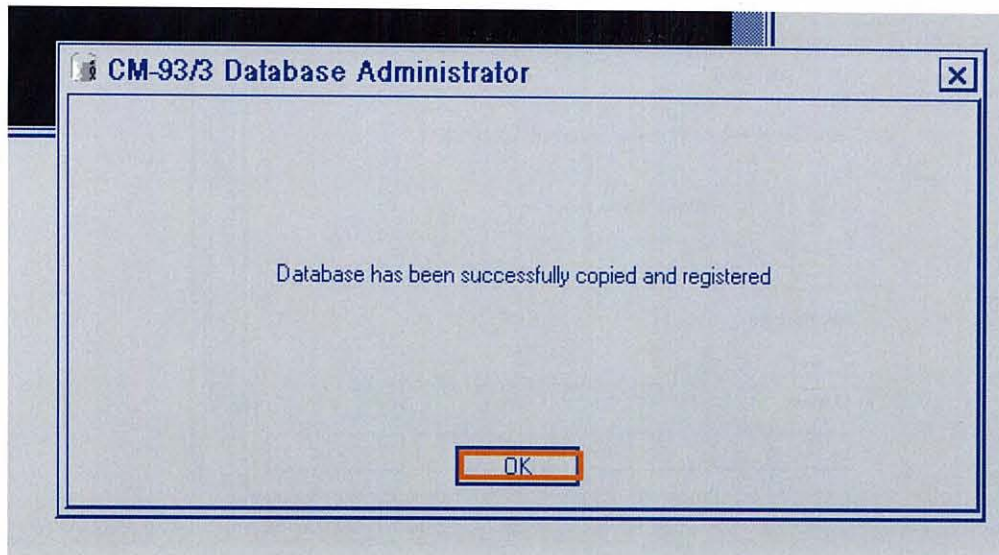


fig.10

10. Make sure that the chart version number is correct.

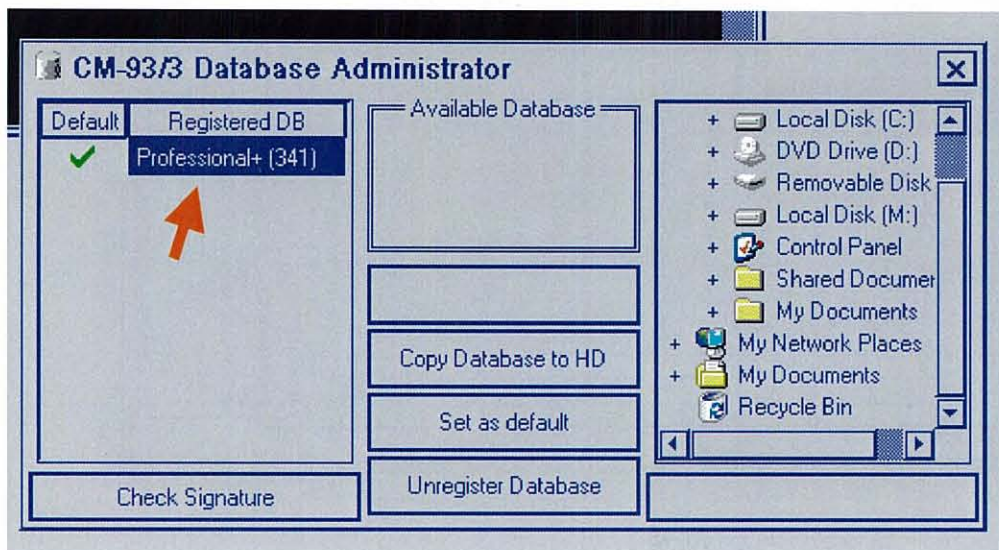


fig.11

11. Close the window by clicking **X** in the upper right hand corner. The system automatically reboots ECDIS software.

Note that the chart is NOT displayed until the Chart License is loaded.