

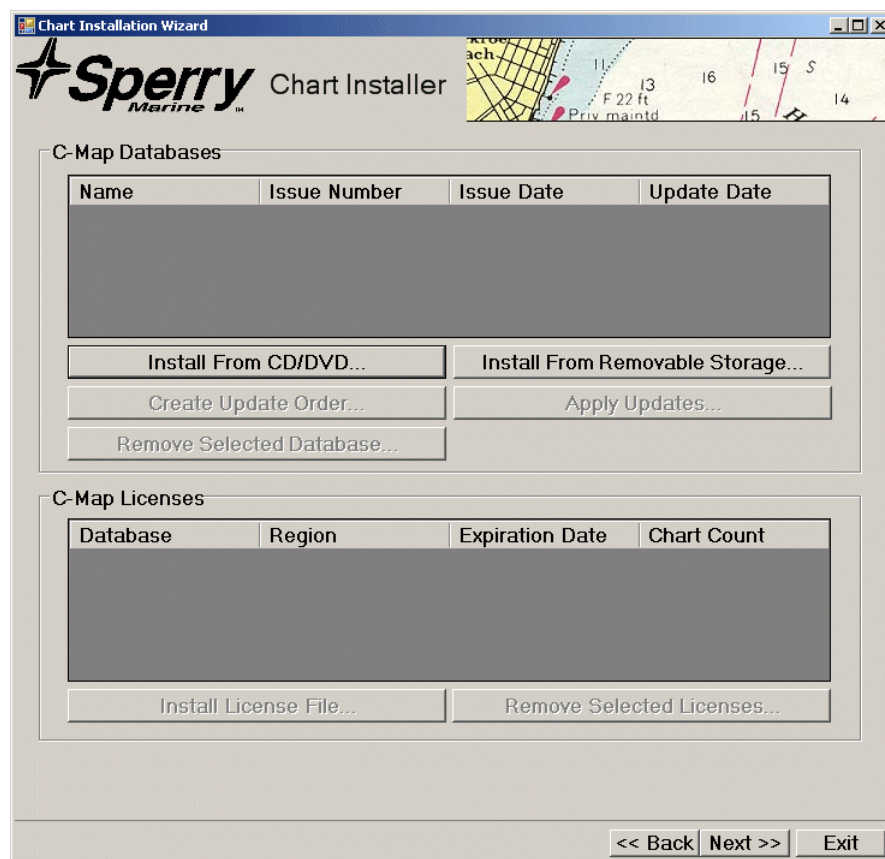
- S-63\*
- DirectENC
- ARCS†
- VPF

Select the radio button of the chart format you wish to install and click on the **Next>>** button.

## 2.2 C-MAP charts

If C-MAP/Professional, C-MAP/Professional+ or C-MAP/ENC chart formats are selected from Figure 3.2 'Operation Type and Chart Format Screen' the next screen enables you to install C-MAP charts.

Figure 3.4 shows the screen when no C-MAP databases have been previously installed.



**Figure 3.4** Chart Installer with no C-MAP Databases

The only actions available when the system includes no C-MAP databases are **Install From CD/DVD** or **Install From Removable Storage**.

\*. Encrypted official chart format, implementation based on IMO S63 standard.

†. Admiralty Raster Chart Service

### 2.2.1 Installing C-MAP Charts

C-MAP charts may be installed from a CD/DVD or an external device such as a USB memory stick.

To install charts from a CD/DVD:

1. Insert the CD or DVD into the CD/DVD drive and click the **Install From CD/DVD** button. The application automatically imports the charts and a popup window appears with a progress bar showing the installation.

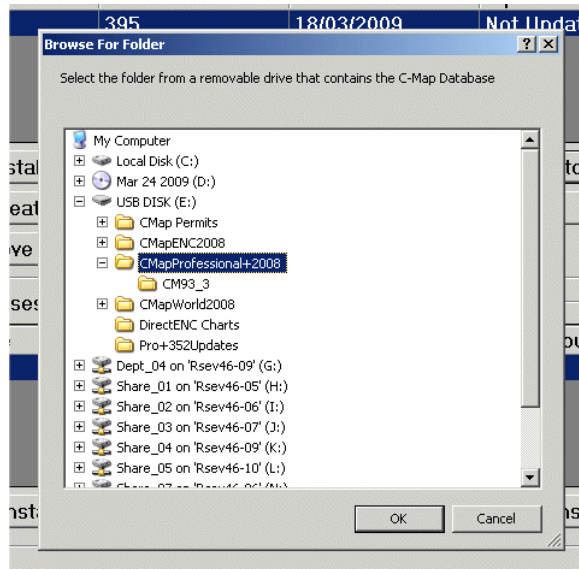


**Figure 3.5** C-MAP Installation Progress

2. If a database for the C-MAP format was previously installed, the old database is automatically unregistered and removed. Existing licences are also automatically re-applied after the new database is installed. When the installation process is complete, click the **OK** button.
3. When the database has been successfully installed, the popup window displays the message **Database Installation Complete!**
4. Click the **OK** button to complete the installation and remove the CD/DVD from the drive.

To install charts from a removable storage device:

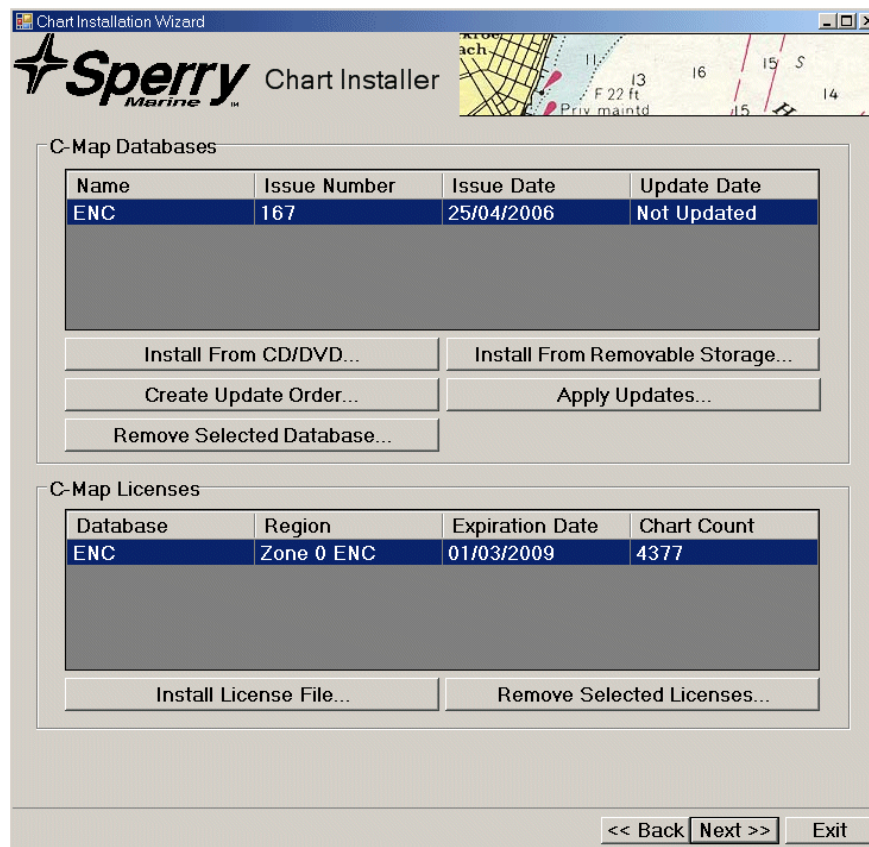
1. Install the device into a USB socket at the front of the PC and click on the **Install From Removable Storage** button. A Browse for Folder popup window appears from where you select the folder that contains the C-MAP database, see Figure 3.6.



**Figure 3.6** Installing C-MAP from Removable Storage

2. The subsequent C-MAP installation process from a removable storage device is the same as described for a CD/DVD.

When one or more C-MAP databases have been installed then additional actions may be selected, as shown in the following typical screen below.



**Figure 3.7** Chart Installer with C-MAP Databases Installed

## 2.2.2 C-MAP License Files

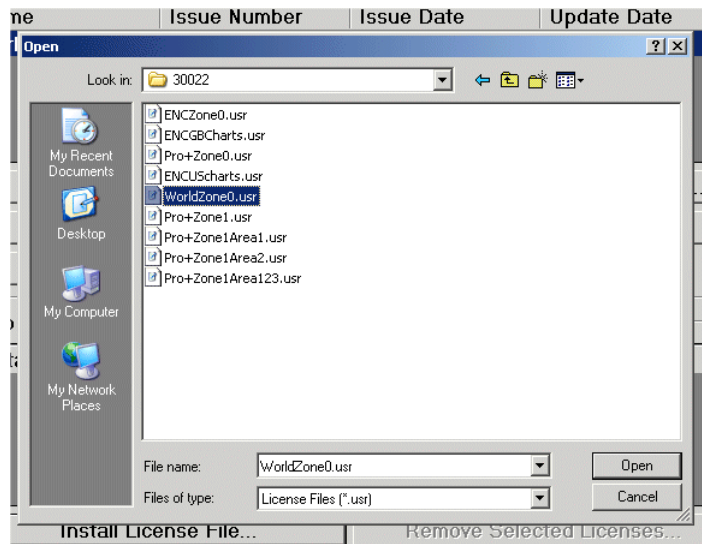
### 2.2.2.1 Installing License Files

After installation of a C-MAP database a license file for the database must be installed.

The license file is provided by C-MAP, usually via email. Each license file relates to a specific eToken reference number, which is located on the C-MAP USB key. When the license file has been received, it should be copied onto a USB memory stick.

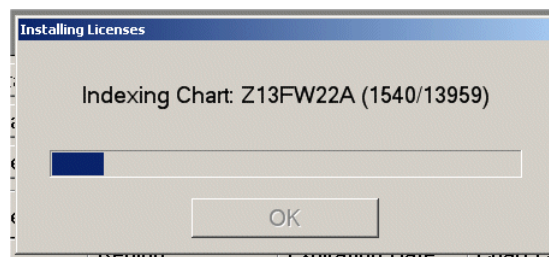
To install a license file:

1. Insert the memory stick containing the license file into a USB socket at the front of the PC and click on the **Install License File** button. From the popup window navigate to the license file and click the **Open** button. Note that all license files end in **.usr**, see Figure 3.8.



**Figure 3.8** Installing C-MAP License File

2. When a license is applied, the database is automatically re-indexed to ensure the index is in sync with the licensed set of charts. A popup window appears showing the indexing progress, see Figure 3.9.



**Figure 3.9** Indexing Chart Database

**Note:** Charts will not be re-indexed if the regional zones covered by the license have not changed. For example, if a license with a later expiration date is imported, the region covered by this license file is not re-indexed.

- When the indexing completes, an indication is given that the license import operation has succeeded. Click OK to close the popup window.

### 2.2.2.2 Removing License Files

License files that may no longer be required for a particular region of the chart database, or have expired, may be removed.

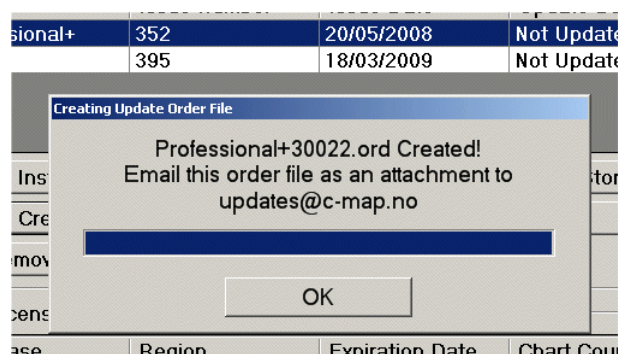
To remove one or more licenses, select the rows from the C-MAP Licences table and click the **Remove Selected Licenses** button. A popup window appears confirming the removal.

After a license is removed, the affected database is automatically re-indexed to reflect the new set of licenses.

### 2.2.3 Create Update Order

To create an update order for a chart database:

- Highlight the database in the C-MAP Databases table and click the **Create Update Order** button. A popup window appears enabling you to select the destination where the order file is to be saved.
- Navigate to the folder on the USB memory stick where the file is to be saved and click OK.
- After the order file is created, confirmation is shown with a reminder to e-mail the file to: updates@c-map.no. see Figure 3.10 below.



**Figure 3.10** Update Order Created

- Using an e-mail application on a PC connected to the internet, compose a new email addressed to updates@c-map.no. Attach the generated order file to the e-mail and send. The subject line and the message of the email can be blank.

After a short time, C-MAP's real time updating service will automatically reply to your e-mail with update information for the chart database, attached in the form of one or more 'answer files' (.ans). For information on importing .ans files, see Section 2.2.4 'Apply Updates'.

## 2.2.4 Apply Updates

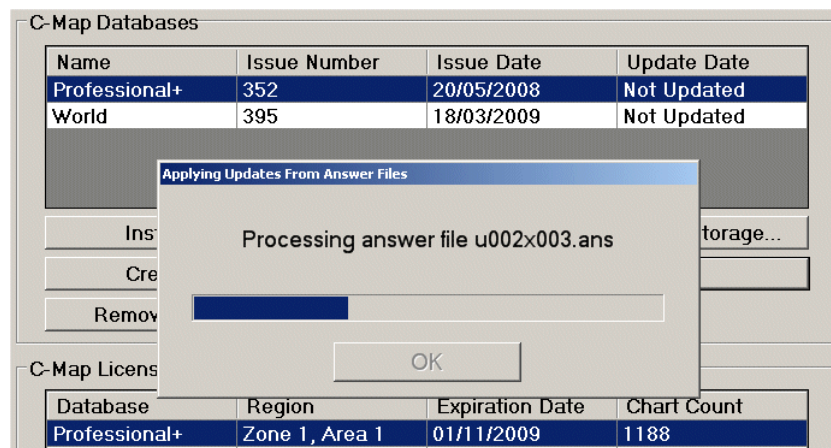
To apply updates to a chart database:

1. Save the answer files received from the C-Map Updating Service emails to a removable device such as a USB memory stick.
2. Select the database from the C-Map Database table that the updates will be applied to.
3. Click on the **Apply Updates** button. A **Browse to Folder** popup window appears prompting to select the directory containing the update files.

**Note:** Ensure the selected directory containing the .ans files only includes update files for the selected chart database, and that these .ans files have not already been applied.

4. Navigate to the directory on the USB memory stick containing the .ans files and click the **OK** button. The following status messages are displayed during and after applying the updates, see Figure 3.11 and Figure 3.12 below.

Note that after the updates are applied the table displays the date when the database was last updated in the **Update Date** column.



**Figure 3.11** Updates Applying

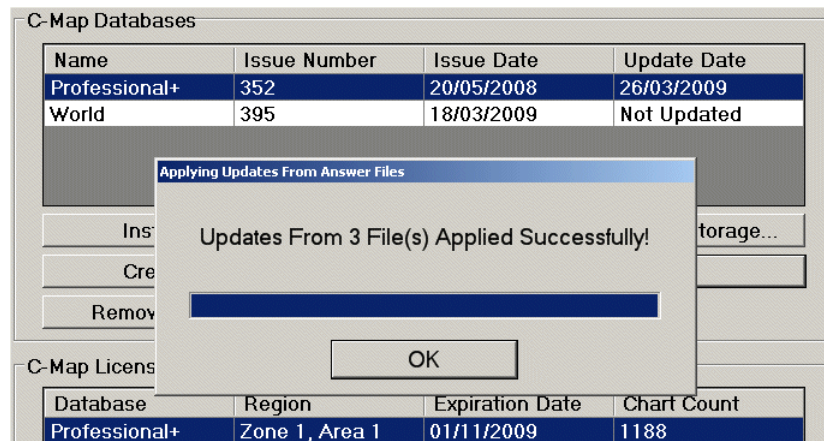


Figure 3.12 Updates Applied

### 2.2.5 Removing Databases

To remove a C-MAP chart database:

1. Select the database from the C-Map Database table and click the **Remove Selected Database** button. A prompt appears requesting confirmation of the database removal, see Figure 3.13.
2. To proceed with the removal click the **Yes** button. The selected database is removed from the system and an indication is given that the operation has succeeded. Click OK to close the popup window.

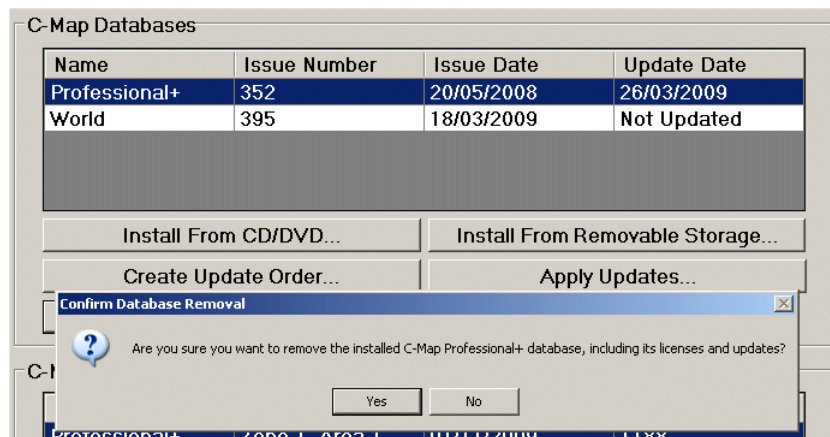


Figure 3.13 Remove Selected Database