

# Jeppesen Marine Pilotage Charts

Tailored Procedural Plans

**You know what you're doing.  
And now you'll confidently  
know where you're going.**

Jeppesen introduces a revolutionary new service designed to standardize operations, support Bridge Team Management, improve training and communication, and capture and vet best practices based on the knowledge of your most experienced Masters.

Jeppesen Marine Pilotage Charts (MPCs) is a service offering of procedural charts tailor-made to meet the unique needs of each customer. The value of Jeppesen MPCs lies in the consistent, easy-to-use format which provides operators with the ability to implement best practices to improve the safety, efficiency and bridge team communication during critical phases during a voyage. Jeppesen Marine Pilotage Charts illustrate the preferred course and include additional procedural information which is especially helpful in challenging environments such as the arrival and departure from ports. While MPCs cannot replace navigational charts, they do include a limited amount of navigational content as is typically found on charts produced by the hydrographic office.

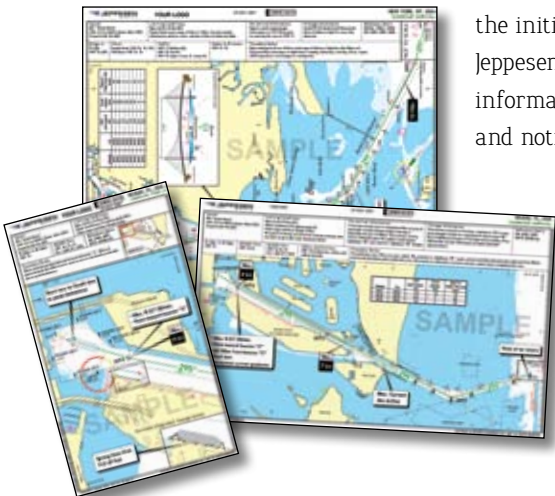
Jeppesen develops procedures in cooperation with your experienced mariners. Once the procedures have been drafted and approved, Jeppesen prints and distributes manuals to each vessel complimented by electronic distribution of the procedures for easy

access by bridge and office personnel. After the initial distribution of the procedures, Jeppesen continuously monitors source information published by various authorities and notifies you of changes that could

potentially impact your operations.

Based on source information changes or procedural changes from within the company,

Jeppesen revises and distributes updated procedures at your request.



**:: Easy-to-use graphic format**

**:: Tailored to your operation—can be further tailored to meet the unique needs of each fleet or class of vessels.**

**:: Aggregates information from numerous sources**

**:: Aids Master-pilot briefing**

**:: Procedures available in paper and electronic form**

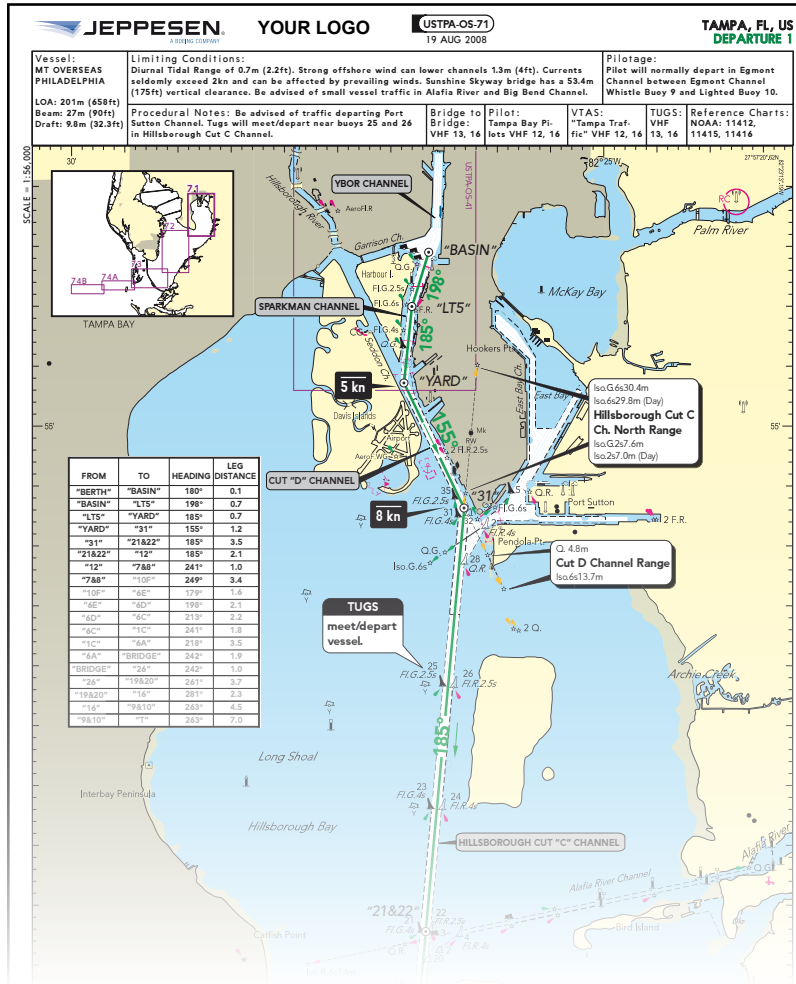


[jeppesen.com](http://jeppesen.com)

*Jeppesen is a Boeing Company*

# Jeppesen Marine Pilotage Charts

Tailored Procedural Plans



## HEADER

## BRIEFING STRIP™

## PLANVIEW

## BENEFITS

- :: Reduces bridge team workload by aggregating information into one easy-to-use source.
- :: Provides basis for retaining valuable corporate knowledge—capture knowledge from experienced Masters and make it available to all bridge teams.
- :: Provides effective tool for Master-pilot briefing.
- :: Enables more effective Bridge Team Management.
- :: Allows you to standardize operations during critical phases.
- :: Provides a proven way to mitigate risk by providing consistent guidelines across your fleet.
- :: Serves as an adjunct to marine regulatory requirements

## HEADER

The Header portion of the chart provides location information and indexing for quick chart retrieval.

## BRIEFING STRIP™

Jeppesen's Briefing Strip provides access to information typically found in a variety of sources in an easy-to-use format. This can include:

- Vessel characteristics
- Port contacts
- Pre-arrival considerations
- Pilot information
- General procedural information

## PLANVIEW

The Planview provides a graphical portrayal of the procedure including:

- Decluttered graphical depiction of port facility
- Easy access to location-specific procedural information
- Waypoint information during various phases of the arrival or departure
- Speed information including recommended speed, restrictions, and trend arrows
- Color-coded depth contours clearly illustrating areas the ship can operate and those to be avoided
- Points of Intersect and distances
- Critical Distances
- Wheel Over Points
- Mooring Diagrams

## FOR MORE INFORMATION

Visit us on the web at:  
[www.jeppesen.com](http://www.jeppesen.com)  
 Email: [marineinfo@jeppesen.com](mailto:marineinfo@jeppesen.com)

Or call us at:  
 Toll Free: 800.424.2627  
 Global: +1 508.477.7537